



**EDITORIAL BOARD**

*Enrique A. Tayag*  
Enrique A. Tayag, MD, PHSAE, FPSMID, CESO III  
Director IV, Epidemiology Bureau

*Vito G. Roque Jr.*  
Vito G. Roque Jr., MD, PHSAE  
Chief, PHSD, Epidemiology Bureau

*June Cantata B. Corpuz*  
June Cantata B. Corpuz, RN  
Nurse III, PIDSR

*Lee Anne Q. Mappatao-Esguerra*  
Lee Anne Q. Mappatao-Esguerra, RN  
Nurse II, NT Surveillance

*Ma. Romirfa P. Calalang-Aquino*  
Ma. Romirfa P. Calalang-Aquino, RN  
Nurse II, AFP Surveillance

*Jezza Jonah D. Crucena*  
Jezza Jonah D. Crucena, RN  
Nurse II, AEFI

*Jobelle M. Aquino*  
Jobelle M. Aquino, RN  
Nurse II, Measles Surveillance

*Kris Pauline D. Martinez*  
Kris Pauline D. Martinez, RN  
Nurse II, NVPD Surveillance - AMES

*Van Farrah S. Ibea*  
Van Farrah S. Ibea  
Nurse I, NVPD Surveillance - Rotavirus

**Trend**

A total of 382 suspect measles cases were reported nationwide from January 1 to February 14, 2015. Of these, 43 (11.26%) were classified as laboratory confirmed (36) and epi-linked (7) cases (see Table 1). The number of confirmed measles cases decreased significantly in 2015 (99.80%) compared with last year (see Table 2).

Figure 2 shows the distribution of confirmed measles cases by morbidity month. The data includes laboratory confirmed and epi-linked confirmed measles cases.

**Geographic distribution**

The distribution of confirmed measles cases varied considerably among the regions (see Figure 4). Most of the confirmed cases came from Region XI (23.26%), Region XII (16.28%) and Region VIII (16.28%).

**Profile of cases**

Fifty six percent of the confirmed measles cases were male. Majority of the confirmed cases belonged to less than 9 months (20.93%) and 1 year to 5 year old age group (20.93%) Among the confirmed measles cases, 19% were vaccinated with measles containing vaccine. One among the confirmed measles cases died (CFR=2.33).

**TABLE 1. MEASLES AND RUBELLA CASES BY REGION  
PHILIPPINES, JANUARY 1 – FEBRUARY 14, 2015 (N=382)**

REGION	TARGET 2/100K	REPORTED	CONFIRMED MEASLES		MEASLES COMPATIBLE	CONFIRMED RUBELLA		DISCARDED AS NON- MEASLES/RUBELLA	PENDING CLASSIFICATION
			LABORATORY CONFIRMED	EPI-LINKED CONFIRMED		LABORATORY CONFIRMED	EPI-LINKED CONFIRMED		
1	101	4	0	0	0	0	0	0	4
2	69	13	0	0	4	0	0	0	9
3	226	15	0	0	0	0	0	7	8
4A	294	53	0	0	18	0	0	7	28
4B	60	3	0	0	3	0	0	0	0
5	117	2	0	0	0	0	0	0	2
6	152	33	4	0	2	2	0	6	19
7	149	13	4	0	0	0	0	4	5
8	88	30	3	4	19	0	0	0	4
9	75	16	1	0	10	0	0	0	5
10	95	48	0	2	21	0	0	0	25
11	99	81	9	1	12	0	0	2	57
12	93	24	7	0	14	0	0	0	3
ARMM	70	9	2	0	5	0	0	0	2
CAR	35	7	1	0	0	1	0	0	5
CRG	52	16	4	0	1	0	0	2	9
NCR	260	15	1	0	7	0	0	4	3
<b>PHL</b>	<b>2,035</b>	<b>382</b>	<b>36</b>	<b>7</b>	<b>116</b>	<b>3</b>	<b>0</b>	<b>32</b>	<b>99</b>



**FIGURE 2. CONFIRMED\* MEASLES CASES BY REGION AND MONTH  
PHILIPPINES, 2014 VS. 2015\*\* (n=43)**

2015 CASES       2014 CASES

FIGURE 2.1.

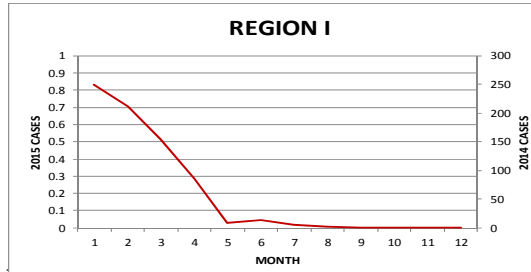


FIGURE 2.2.

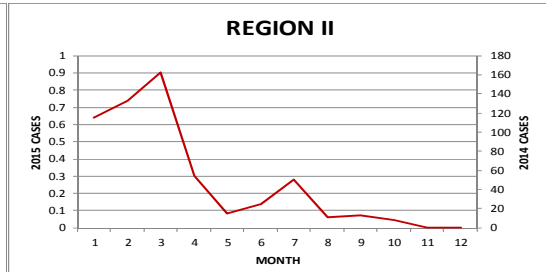


FIGURE 2.3.

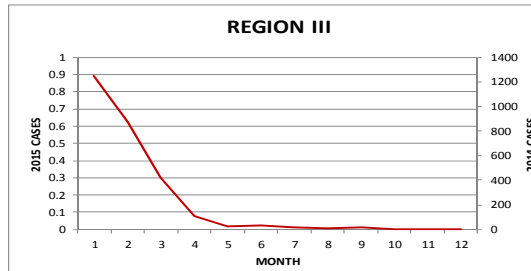


FIGURE 2.5.

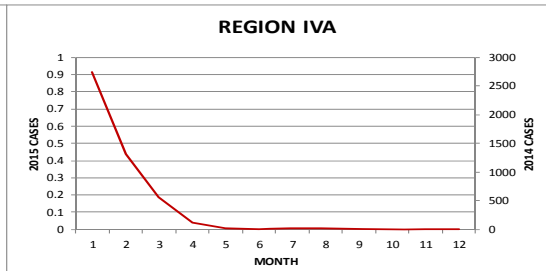


FIGURE 2.6.

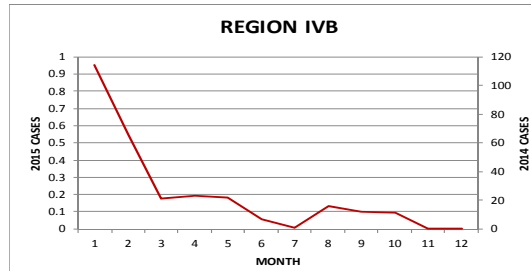


FIGURE 2.7.

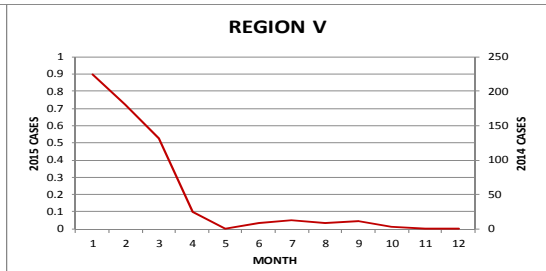


FIGURE 2.8.

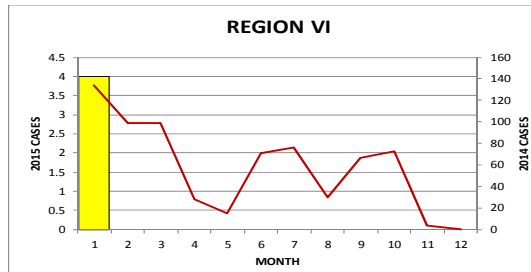


FIGURE 2.9.

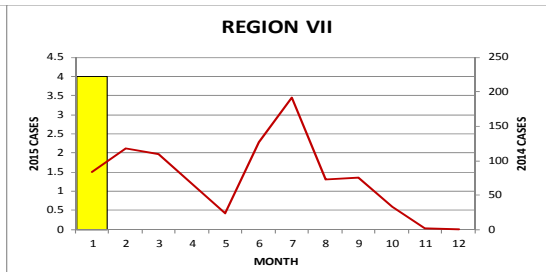


FIGURE 2.10.

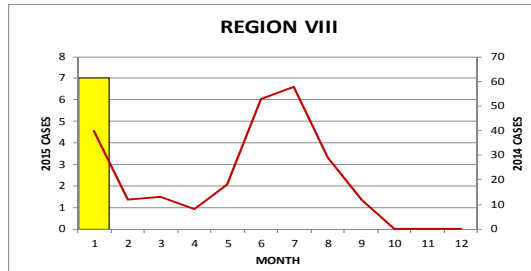


FIGURE 2.11.

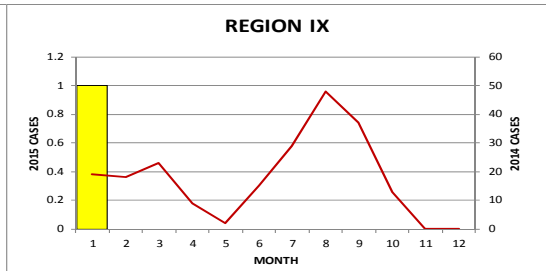




FIGURE 2.12.

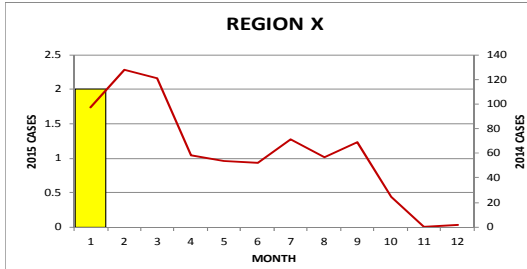


FIGURE 2.13.

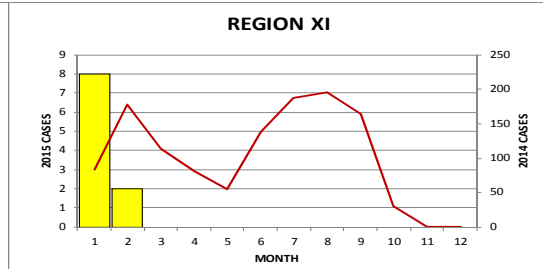


FIGURE 2.14.

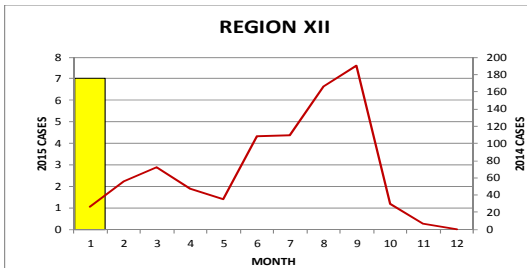


FIGURE 2.15.

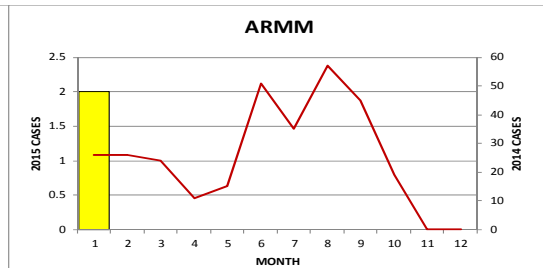


FIGURE 2.16.

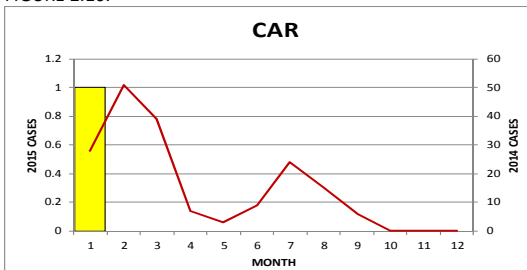


FIGURE 2.17.

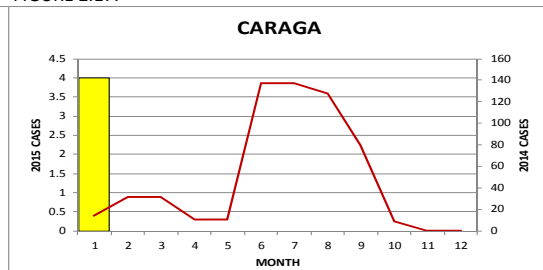


FIGURE 2.18.

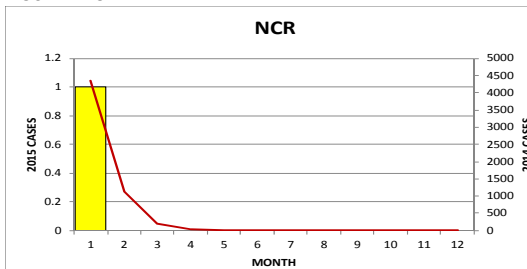
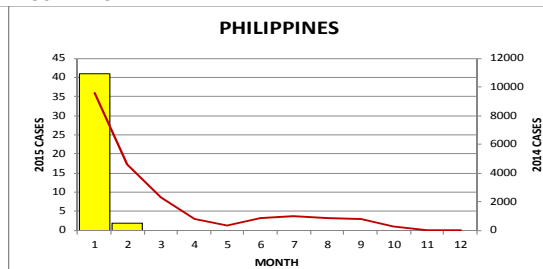


FIGURE 2.19.



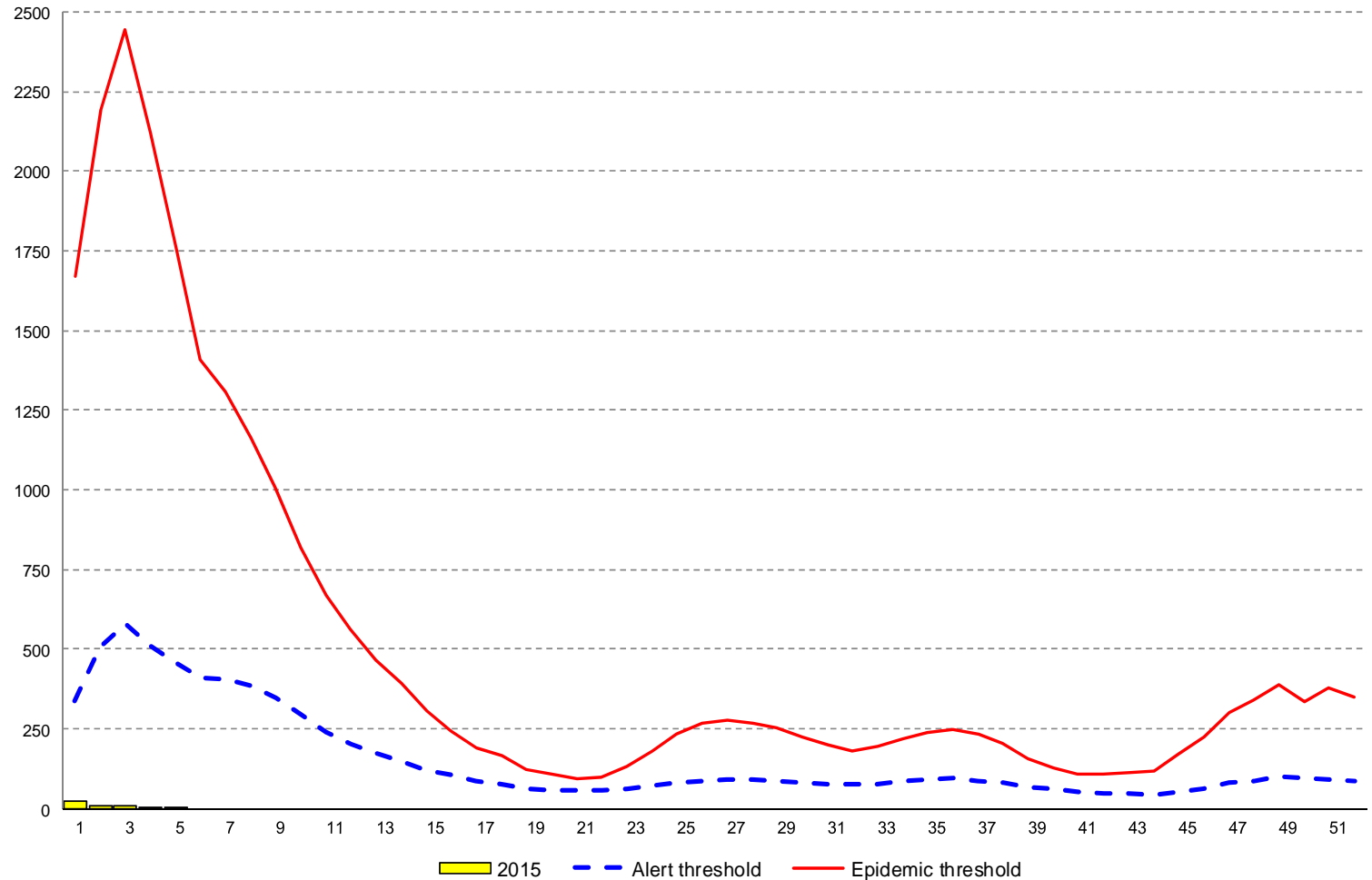
2015\*\* = as of February 14, 2015

Confirmed\* Measles cases = Laboratory confirmed + Epi-linked confirmed Measles



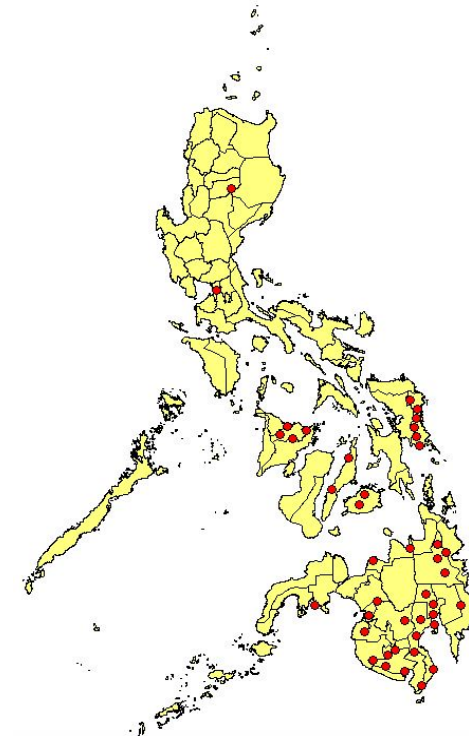
Morbidity Week	2015 cases	Alert Threshold	Epidemic Threshold
1	23	336	1,259
2	7	504	2,809
3	8	577	2,682
4	3	513	2,395
5	2	456	1,637
6		408	1,517
7		403	1,368
8		384	1,296
9		346	1,034
10		293	832
11		241	702
12		202	561
13		170	503
14		146	401
15		120	316
16		102	214
17		86	222
18		75	146
19		63	126
20		56	108
21		55	93
22		56	85
23		61	123
24		68	181
25		79	246
26		87	300
27		89	306
28		88	280
29		85	262
30		82	259
31		76	186
32		74	177
33		76	209
34		84	232
35		90	254
36		93	271
37		86	258
38		78	211
39		66	155
40		58	112
41		51	121
42		47	95
43		45	111
44		42	137
45		50	119
46		60	257
47		78	296
48		87	398
49		98	388
50		97	462
51		92	405
52		84	337

**FIGURE 3. CONFIRMED\* MEASLES ALERT AND EPIDEMIC THRESHOLD  
PHILIPPINES, JANUARY 1 – FEBRUARY 14, 2015 (n=43)**





**FIGURE 4. DISTRIBUTION OF CONFIRMED\* MEASLES CASES  
PHILIPPINES, JANUARY 1 –FEBRUARY 14, 2015 (n=43)**



**TABLE 2. CONFIRMED\* MEASLES CASES AND DEATHS BY REGION  
PHILIPPINES, 2014 vs. 2015\*\* (n=43)**

REGION	CASES			DEATHS			
	2015	2014	% CHANGE	2015	CFR (%)	2014	CFR (%)
1	0	733	↓-100.00	0	0.00	7	0.95
2	0	586	↓-100.00	0	0.00	1	0.17
3	0	2760	↓-100.00	0	0.00	11	0.40
4A	0	4798	↓-100.00	0	0.00	36	0.75
4B	0	293	↓-100.00	0	0.00	3	1.02
5	0	606	↓-100.00	0	0.00	5	0.83
6	4	696	↓-99.43	0	0.00	1	0.14
7	4	902	↓-99.56	0	0.00	3	0.33
8	7	243	↓-97.12	0	0.00	4	1.65
9	1	213	↓-99.53	0	0.00	0	0.00
10	2	734	↓-99.73	0	0.00	3	0.41
11	10	1229	↓-99.19	1	10.00	0	0.00
12	7	846	↓-99.17	0	0.00	2	0.24
ARMM	2	309	↓-99.35	0	0.00	2	0.65
CAR	1	182	↓-99.45	0	0.00	0	0.00
CRG	4	591	↓-99.32	0	0.00	1	0.17
NCR	1	5734	↓-99.98	0	0.00	31	0.54
<b>PHL</b>	<b>43</b>	<b>21455</b>	<b>↓-99.80</b>	<b>1</b>	<b>2.33</b>	<b>110</b>	<b>0.51</b>

2015\*\* = as of February 14, 2015

Confirmed\* Measles cases = Laboratory confirmed + Epi-linked confirmed Measles



**FIGURE 5. IMMUNIZATION STATUS OF CONFIRMED\* MEASLES CASES BY AGE GROUP  
PHILIPPINES, JANUARY 1 – FEBRUARY 14, 2015 (n=43)**

■ VACCINATED ■ NOT VACCINATED ■ UNKNOWN

FIGURE 5.1.

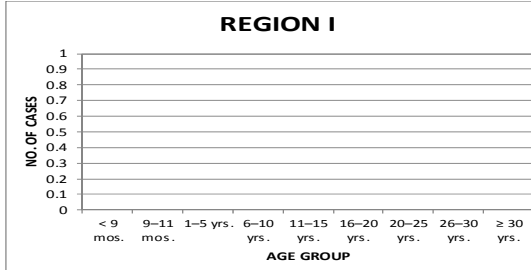


FIGURE 5.2.

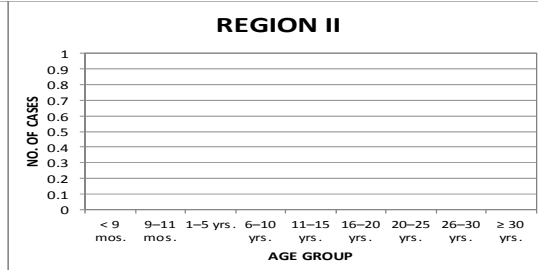


FIGURE 5.3.

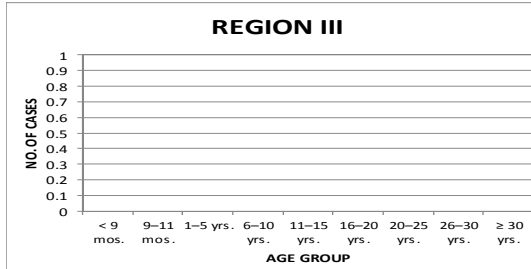


FIGURE 5.4.

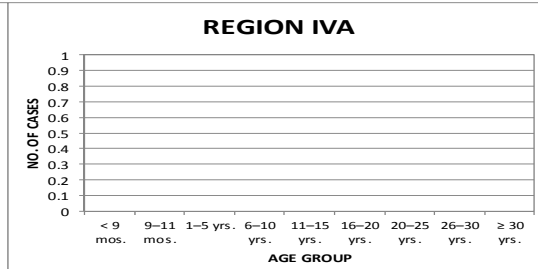


FIGURE 5.5.

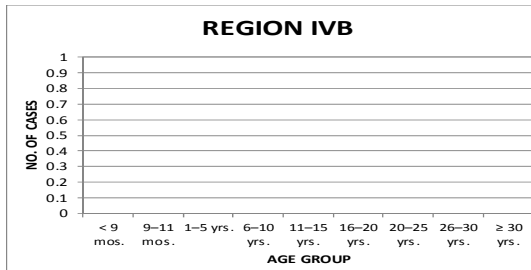


FIGURE 5.6.

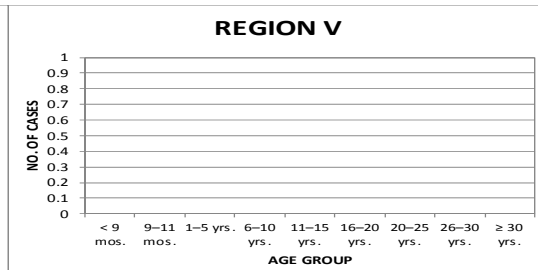


FIGURE 5.7.

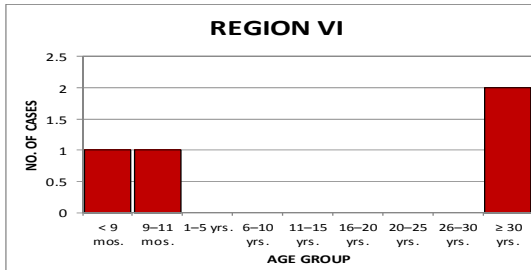


FIGURE 5.8.

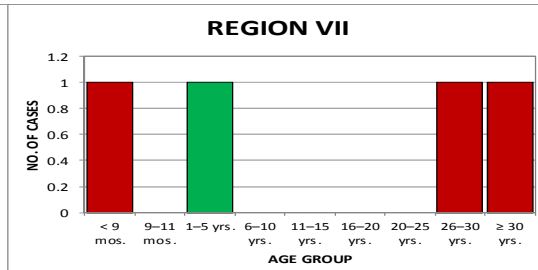


FIGURE 5.9.

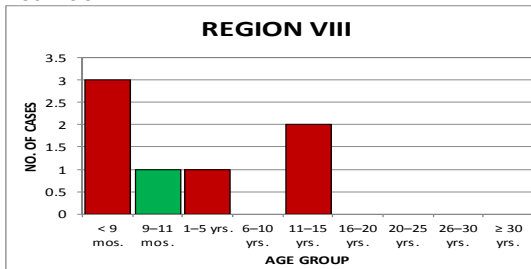


FIGURE 5.10.

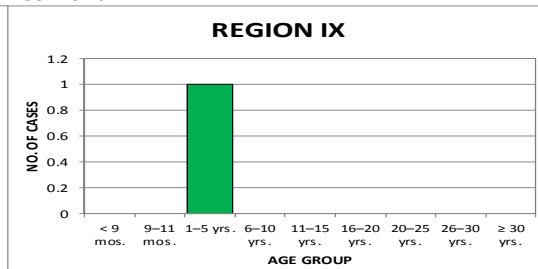




FIGURE 5.11.

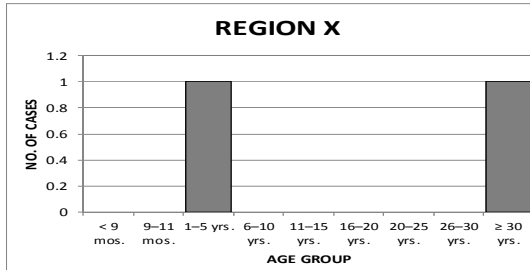


FIGURE 5.12.

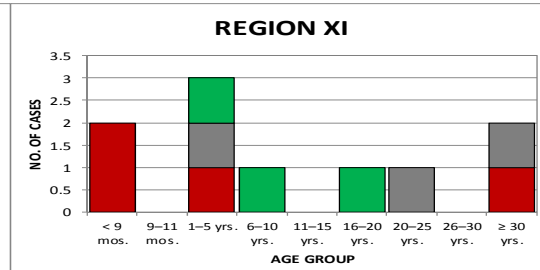


FIGURE 5.13.

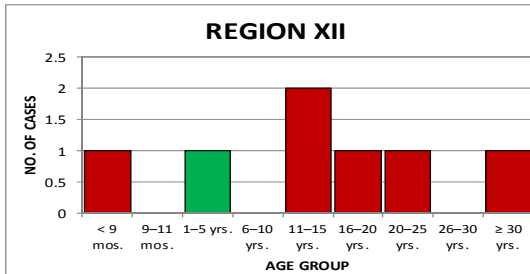


FIGURE 5.14.

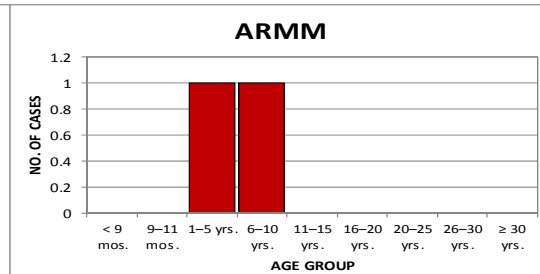


FIGURE 5.15.

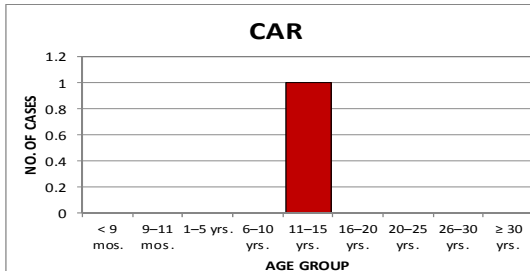


FIGURE 5.16.

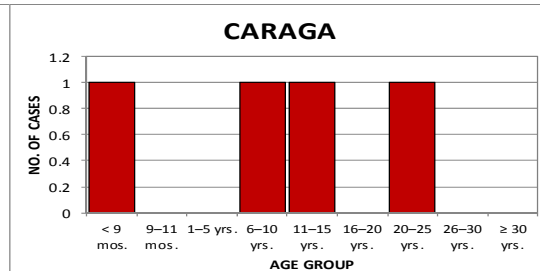


FIGURE 5.17.

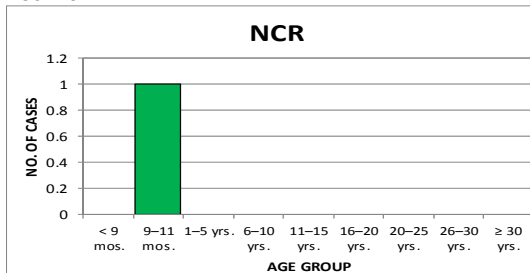
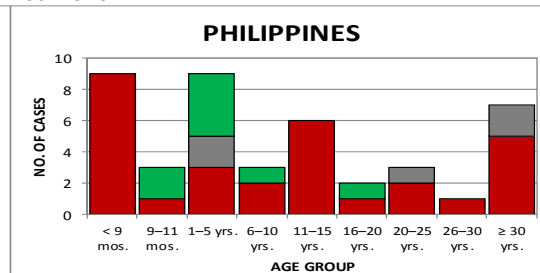


FIGURE 5.18.



Confirmed\* Measles cases = Laboratory confirmed + Epi-linked confirmed Measles



**FIGURE 6. CONFIRMED\* MEASLES CASES BY AGE GROUP AND SEX  
PHILIPPINES, JANUARY 1 – FEBRUARY 14, 2015 (n=43)**

■ MALE ■ FEMALE

FIGURE 6.1.

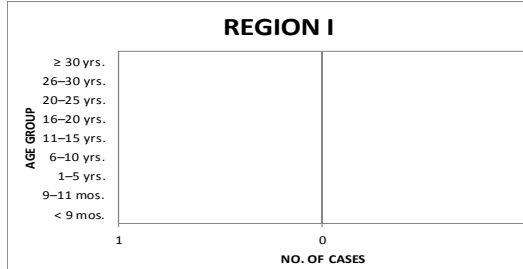


FIGURE 6.2.

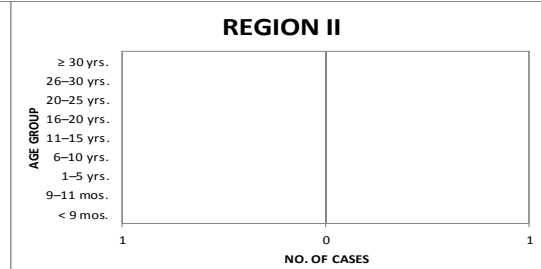


FIGURE 6.3.

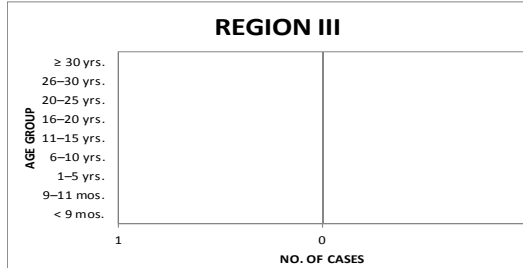


FIGURE 6.4.

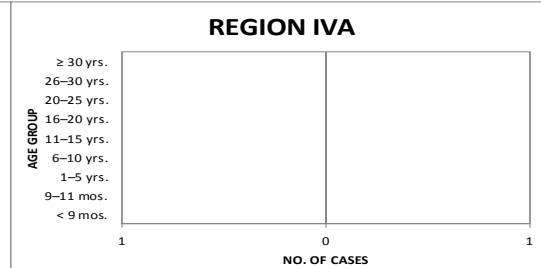


FIGURE 6.5.

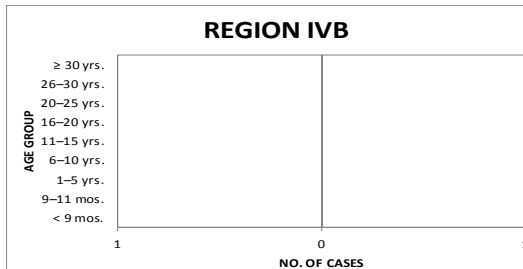


FIGURE 6.6.

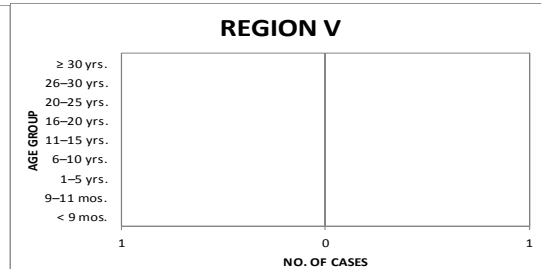


FIGURE 6.7.

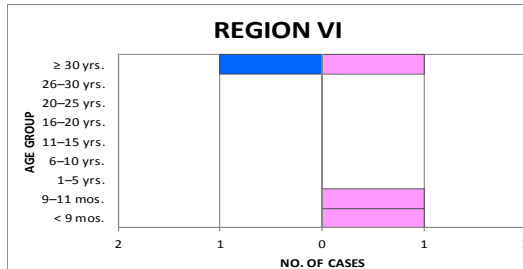


FIGURE 6.8.

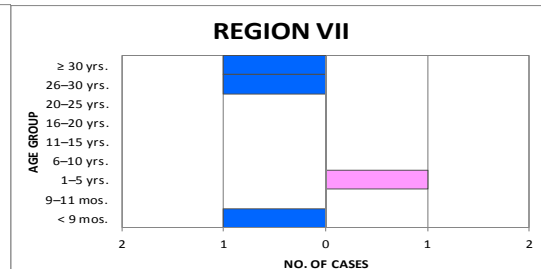


FIGURE 6.9.

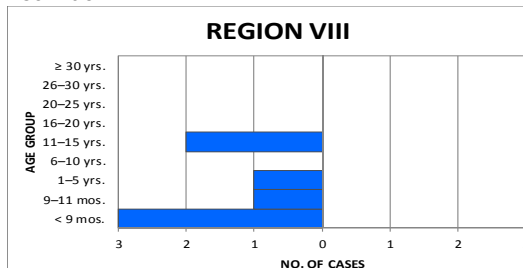


FIGURE 6.10.

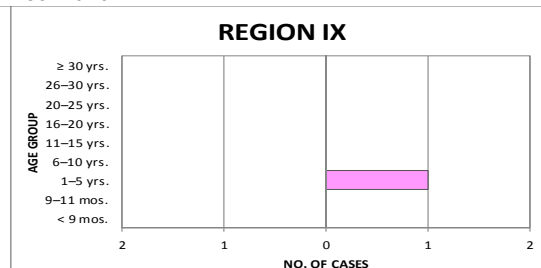






FIGURE 6.11.

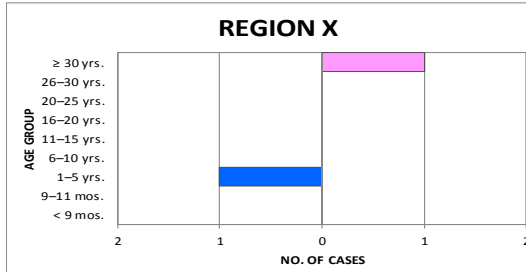


FIGURE 6.12.

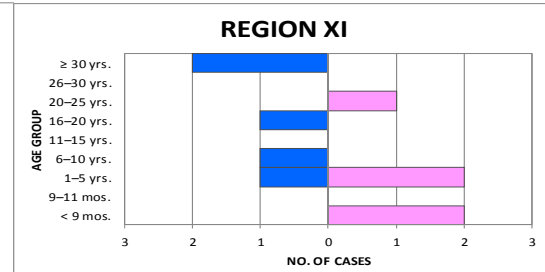


FIGURE 6.13.

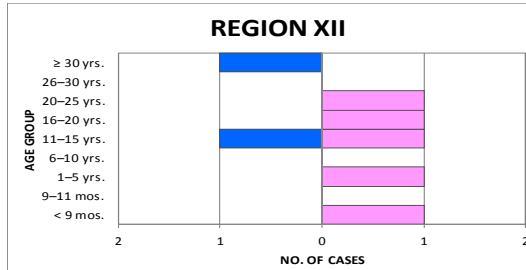


FIGURE 6.14.

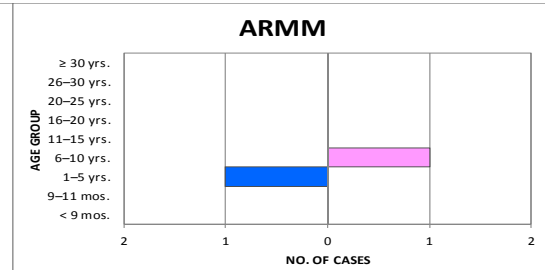


FIGURE 6.15.

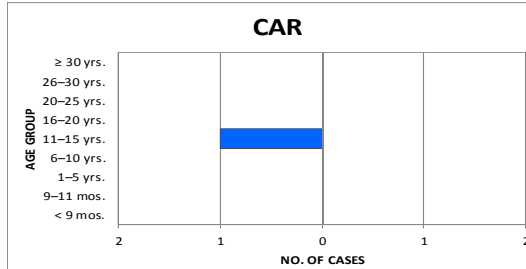


FIGURE 6.16.

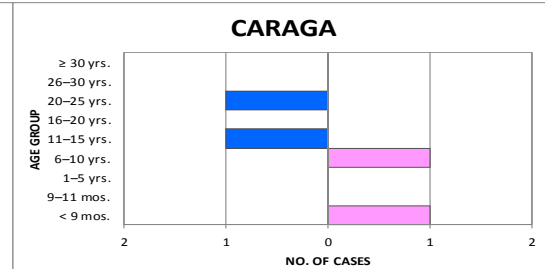


FIGURE 6.17.

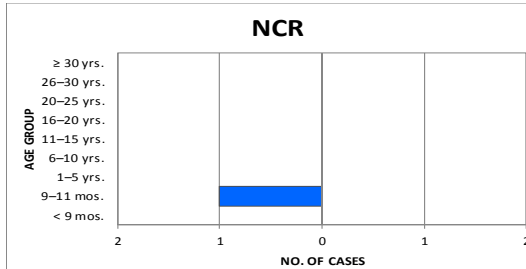
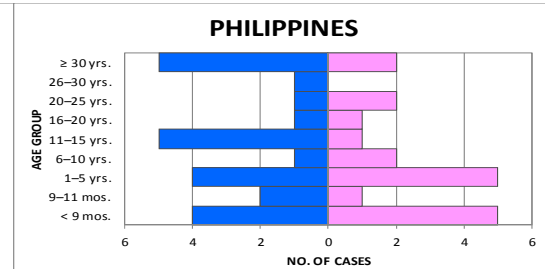


FIGURE 6.18.



Confirmed\* Measles cases = Laboratory confirmed + Epi-linked confirmed Measles



**FIGURE 7. CASE FATALITY RATIO AMONG CONFIRMED\* MEASLES CASES BY AGE GROUP  
PHILIPPINES, JANUARY 1 – FEBRUARY 14, 2015 (n=1)**

FIGURE 7.1.

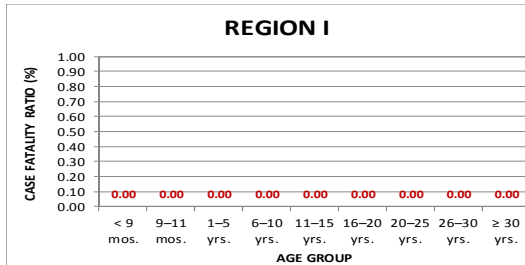


FIGURE 7.2.

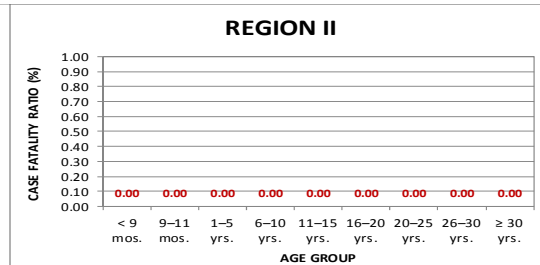


FIGURE 7.3.

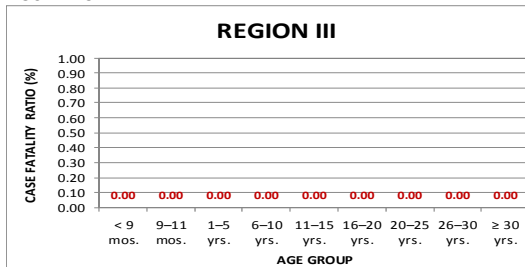


FIGURE 7.4.

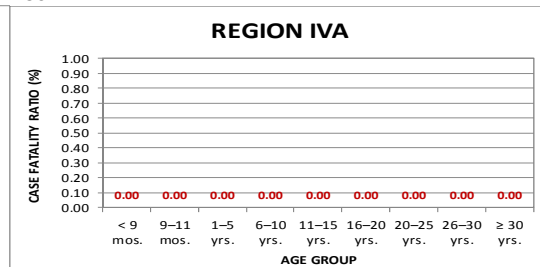


FIGURE 7.5.

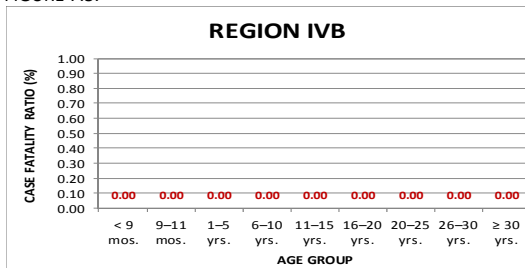


FIGURE 7.6.

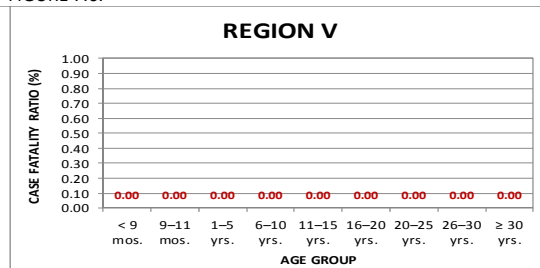


FIGURE 7.7.

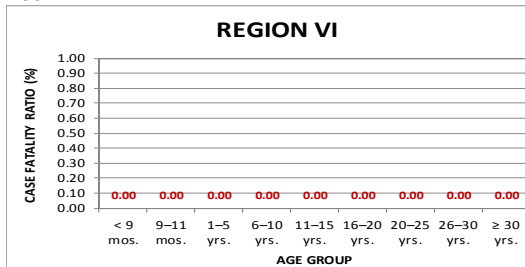


FIGURE 7.8.

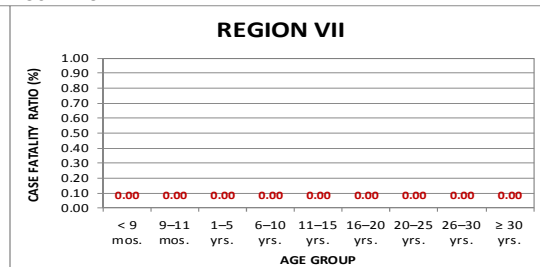


FIGURE 7.9.

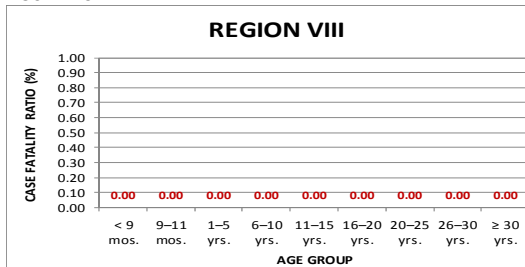


FIGURE 7.10.

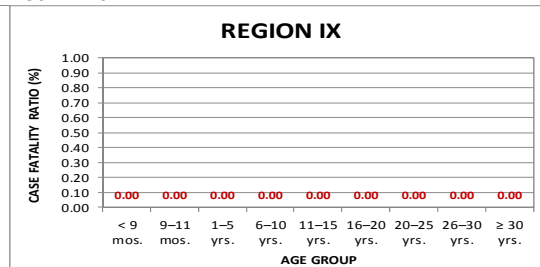




FIGURE 7.11.

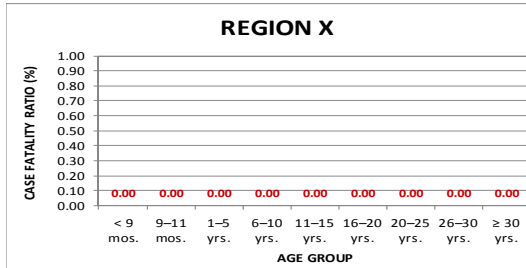


FIGURE 7.12.

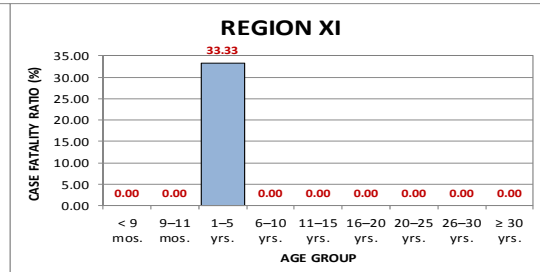


FIGURE 7.13.

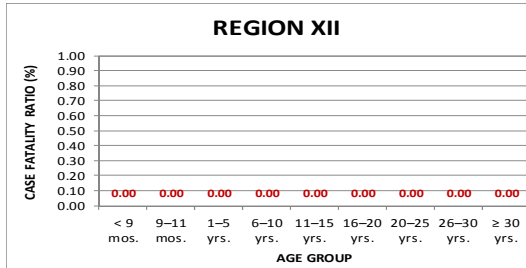


FIGURE 7.14.

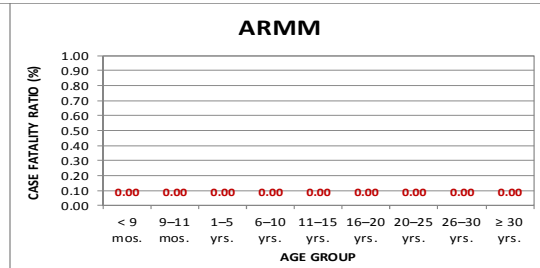


FIGURE 7.15.

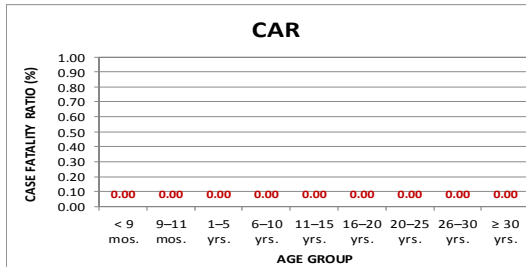


FIGURE 7.16.

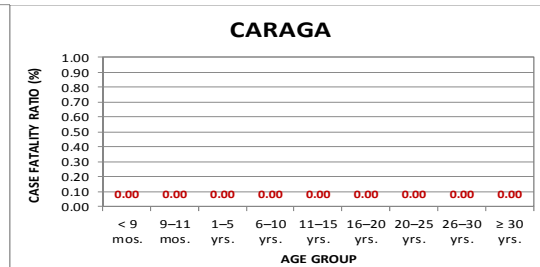


FIGURE 7.17.

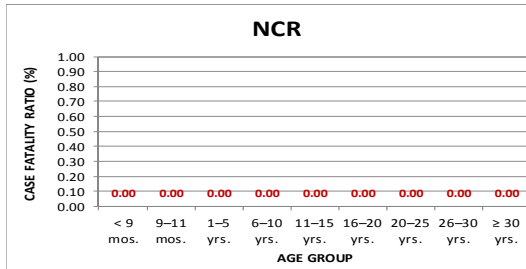
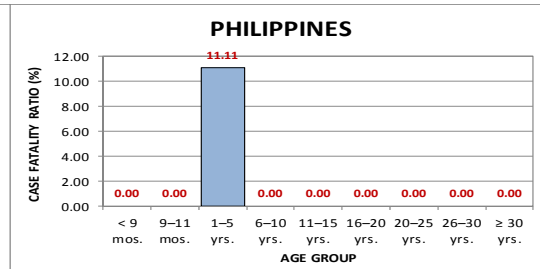


FIGURE 7.18.



Confirmed\* Measles cases = Laboratory confirmed + Epi-linked confirmed Measles



### Measles Elimination in the Philippines

The goal for Measles elimination in the Western Pacific Region was set in 2005. In September 2012, the Regional Committee for the Western Pacific Region encouraged its member states to undertake the challenges for Measles elimination.

The Department of Health through the Epidemiology Bureau take part in achieving this goal by closely monitoring the standard surveillance indicators to ensure that the Measles elimination goal will be attained and sustained. Currently, the Philippines has attained the low incidence target rate of <1/1million population (0.42/1,000,000 population as of January 1 – February 14, 2015) compared with the same period last year (232.19/1,000,000 population), illustrating that the country is line in attaining the elimination goal.

**TABLE 3. MEASLES SURVEILLANCE INDICATORS BY REGION  
PHILIPPINES, JANUARY 1 – FEBRUARY 14, 2015**

REGION	MEASLES INCIDENCE RATE		BLOOD ADEQUACY RATE		SUSPECT MEASLES CASES ADEQUATELY INVESTIGATED		SUSPECT MEASLES REPORTING RATE		NON-MEASLES/ NON-RUBELLA RATE		MEASLES COMPATIBLE %	
	Target: <1/1,000,000 Pop.		Target: ≥80%		Target: ≥80%		Target: ≥2/100,000 Pop.		Target: ≥2/100,000 Pop.		Target: <10%	
	2014	2015	2014	2015	2014	2015	2014	2015*	2014	2015*	2014	2015
1	160.43	0.00	91	100	80	50	47.62	0.47	3.24	0.00	61	0
2	113.54	0.00	62	69	52	69	58.12	2.25	1.64	0.00	67	31
3	272.27	0.00	79	100	59	53	57.37	0.80	3.62	0.37	50	0
4A	366.54	0.00	72	62	33	30	62.60	2.16	3.65	0.29	41	34
4B	156.82	0.00	39	0	28	0	57.75	0.60	1.29	0.00	79	100
5	128.95	0.00	71	100	60	100	34.49	0.21	1.65	0.00	64	0
6	62.37	0.53	95	91	55	70	31.34	2.60	4.20	0.47	50	6
7	38.44	0.54	90	85	69	23	27.77	1.05	2.52	0.32	44	0
8	56.70	1.60	18	42	11	33	31.88	4.11	0.76	0.00	78	63
9	22.03	0.27	63	50	52	38	20.29	2.56	0.73	0.00	65	63
10	50.49	0.42	60	54	48	25	50.69	6.04	1.63	0.00	64	44
11	59.67	2.03	83	84	73	54	67.59	9.84	4.29	0.24	53	15
12	40.05	1.50	48	38	39	33	88.31	3.09	2.97	0.00	74	58
ARMM	33.21	0.57	42	44	32	11	43.62	1.54	0.95	0.00	76	56
CAR	82.49	0.57	96	100	89	86	35.80	2.38	3.75	0.00	56	0
CRG	31.38	1.53	79	88	70	25	71.21	3.67	4.11	0.46	60	6
NCR	817.45	0.08	71	53	41	7	105.51	0.69	4.76	0.18	52	47
PHL	232.19	0.42	70	69	48	41	57.04	2.25	3.07	0.19	56	30

2015\* - Annualized rate

#### Definition of Terms:

**Laboratory confirmed measles case** – A suspect measles case with a positive laboratory test result for measles-specific IgM antibodies or other approved laboratory test method

**Laboratory confirmed rubella case** – A suspect measles case with a positive laboratory test result for rubella-specific IgM antibodies or other approved laboratory test method

**Clinically measles compatible case** – A case that meets the suspect case definition for measles but for which no adequate blood specimen was taken and which has not been linked epidemiologically to another case positive for measles IgM or another laboratory-confirmed communicable disease

**Epidemiologically-linked measles (or rubella) case** – A suspect measles case that has not been confirmed by laboratory but that is geographically AND temporally related (with dates of rash onset occurring between 7 and 21 days apart) to a laboratory-confirmed case or (in the event of an outbreak) to another epidemiologically confirmed measles case.

**Discarded as non-measles/non-rubella** – A case that meets the clinical case definition for measles and discarded as non-measles/rubella case.

**Pending Classification** - Cases with blood specimen collected and pending laboratory results.

**Alert threshold** – Refers to the level of occurrence of disease that serves as an early warning for epidemics. An increase in the number of cases above the threshold level should trigger an investigation, epidemic preparedness and implement appropriate prevention and control measures.

**Epidemic threshold** – Refers to the level of occurrence of disease above which an urgent response is required. The threshold is specific to each disease and depends on the infectiousness, other determinants of transmission and local endemicity levels.