



January 1 – July 1, 2017 Epidemiology Bureau
Public Health Surveillance Division

Trend in the Philippines

This report summarizes the Influenza-like Illness (ILI) surveillance activities nationwide. A total of **30,963** Influenza-like Illness cases were reported nationwide from January 1 to July 1, 2017. This is **48.9%** lower compared to the same time last year (**60,599**).

Fig. 1 Distribution of Influenza-like Illness Cases by Morbidity Week
 Philippines, as of July 1, 2017 (N=30,963)

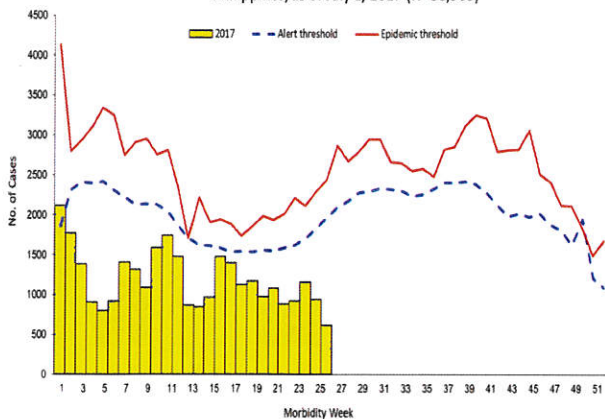
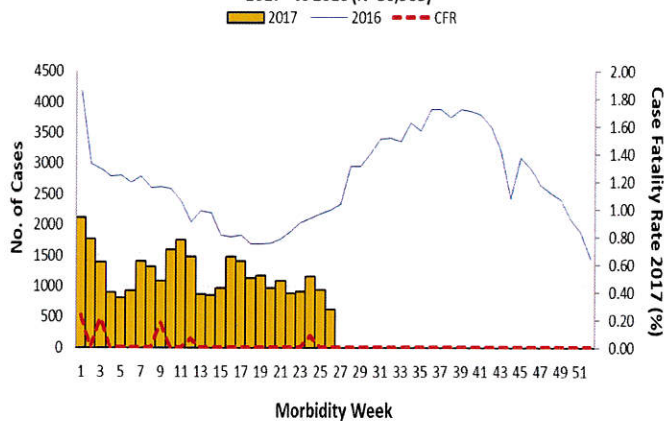


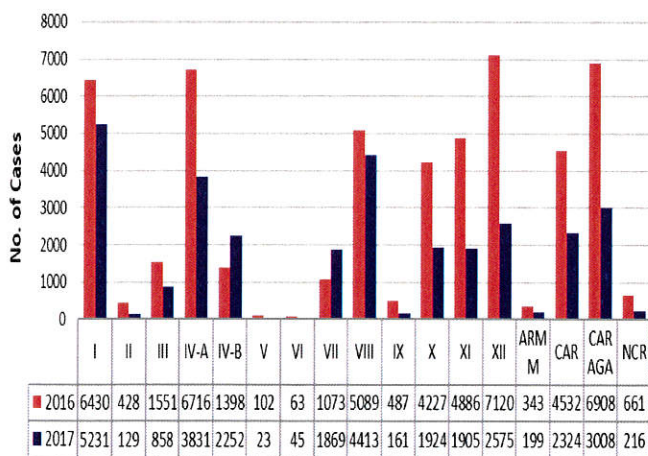
Fig. 2 Influenza Cases by Morbidity Week, Philippines, as of July 1, 2017
 2017* vs 2016 (N=30,963)



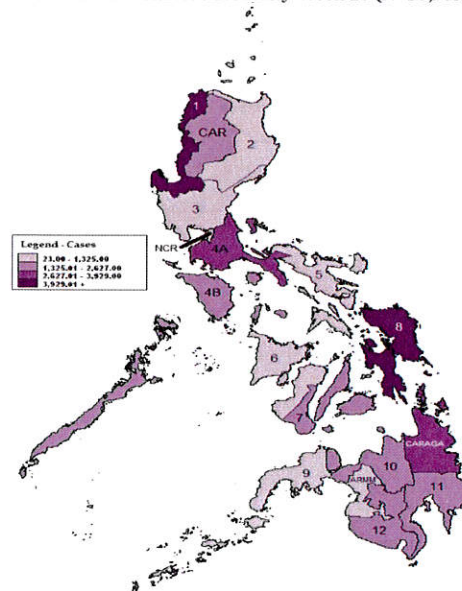
Geographic Distribution

Most of the cases were from the following regions: **Region I** (16.89%), **Region VIII** (14.25%), **Region IV-A** (12.37%), **Region CARAGA** (9.71%), and **Region XII** (8.32%) (Fig. 3)

Fig.3 Influenza-like Illness Cases by Region
 Philippines, 2017* vs 2016,



Influenza-like Illness Morbidity Week 26 (N=30,963)



**NOTE: Case counts reported here do NOT represent the final number and are subject to change after inclusion of delayed reports and review of cases.*



January 1 – July 1, 2017

Epidemiology Bureau
 Public Health Surveillance Division

Profile of Cases

Ages of cases ranged from less than 1 month to 104 years old. Majority of cases were male (50.8%). Most of the cases belonged to the 1 to 4 years' age group (32.93%) (Fig. 4). There were 12 reported deaths (CFR=0.04%) (Fig. 5).

Fig. 4 Influenza-like Illness Cases by Agegroup and Sex Philippines, as of July 1, 2017 (N=30,963)

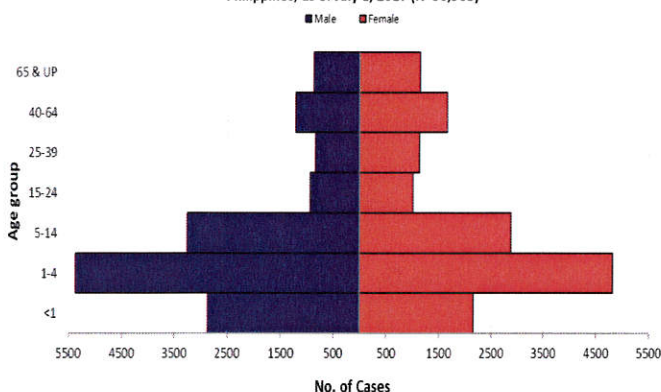


Fig. 5 Influenza-like Illness Case Fatality Rate (CFR) by Age Group, Philippines, as of July 1, 2017

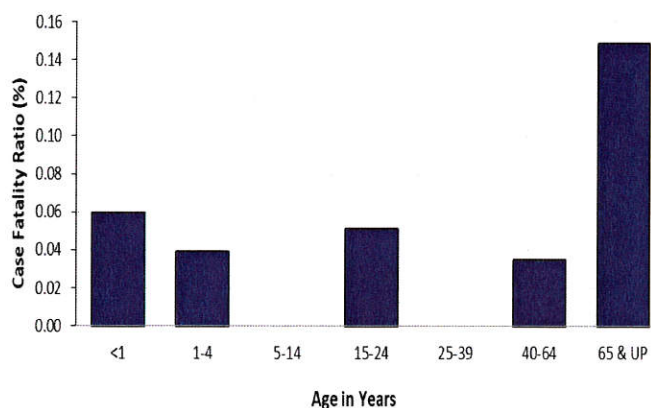


Table 1. Influenza-like Illness Cases & Deaths by Region Philippines, 2017* vs 2016

Region	Cases			Deaths			
	2017	2016	% Change	2017	CFR (%)	2016	CFR (%)
I	5231	7184	→ -27.2	0	0.00	1	0.01
II	129	517	↓ -75.0	0	0.00	1	0.19
III	858	1713	↓ -49.9	0	0.00	0	0.00
IV-A	3831	7869	↓ -51.3	2	0.05	1	0.01
IV-B	2252	1691	↑ 33.2	0	0.00	1	0.06
V	23	113	↓ -79.6	0	0.00	0	0.00
VI	45	76	↓ -40.8	0	0.00	0	0.00
VII	1869	1321	↑ 41.5	0	0.00	1	0.08
VIII	4413	5836	→ -24.4	5	0.11	1	0.02
IX	161	520	↓ -69.0	0	0.00	0	0.00
X	1924	4855	↓ -60.4	0	0.00	0	0.00
XI	1905	5710	↓ -66.6	0	0.00	1	0.02
XII	2575	8207	↓ -68.6	0	0.00	1	0.01
ARMM	199	402	↓ -50.5	0	0.00	0	0.00
CAR	2324	5827	↓ -60.1	1	0.04	0	0.00
CARAGA	3008	8042	↓ -62.6	4	0.13	11	0.14
NCR	216	716	↓ -69.8	0	0.00	0	0.00
Total	30,963	60,599	↓ -48.9	12	0.04	19	0.03

EDITORIAL BOARD

Irma L. Asuncion
 IRMA L. ASUNCION, MD, MHA, CESO IV
 Director IV, Epidemiology Bureau

Genesis May J. Samonte
 GENESIS MAY J. SAMONTE, MD, MSc, PHSAE
 OIC-Division Chief PHSD

Mariela A. Dejesa
 MARIELA A. DEJESA, MD, MPM
 Medical Officer IV, PHSD

June B. Corpuz
 June B. Corpuz, RN
 PIDSR Program Manager

Jezza Jonah D. Crucena
 Jezza Jonah D. Crucena, RN
 VPD Program Manager

Allan P. Ignacio
 Allan P. Ignacio
 Statistician II

*NOTE: Case counts reported here do NOT represent the final number and are subject to change after inclusion of delayed reports and review of cases.