

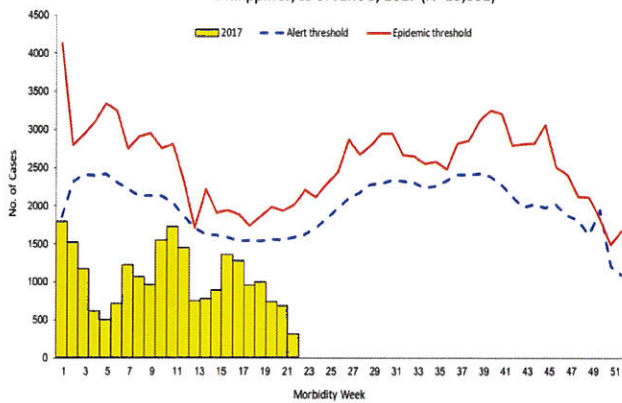


**January 1 – June 3, 2017** **Epidemiology Bureau**  
**Public Health Surveillance Division**

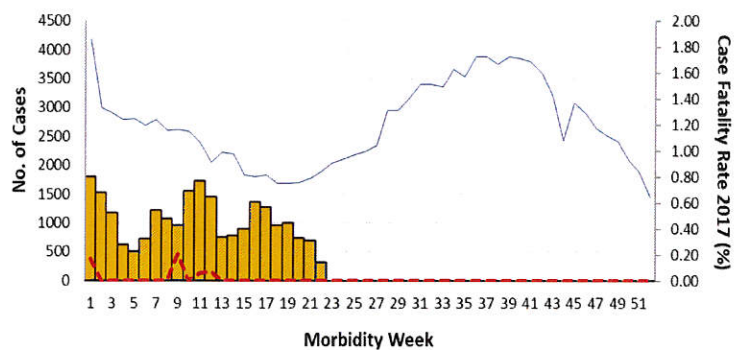
## Trend in the Philippines

This report summarizes Influenza-like Illness (ILI) surveillance activities nationwide. A total of **23,031** Influenza-like Illness cases were reported nationwide from January 1 to June 3, 2017. This is **55.7%** lower compared to the same time last year (**52,014**).

**Fig. 1 Distribution of Influenza-like Illness Cases by Morbidity Week**  
 Philippines, as of June 3, 2017 (N=23,031)



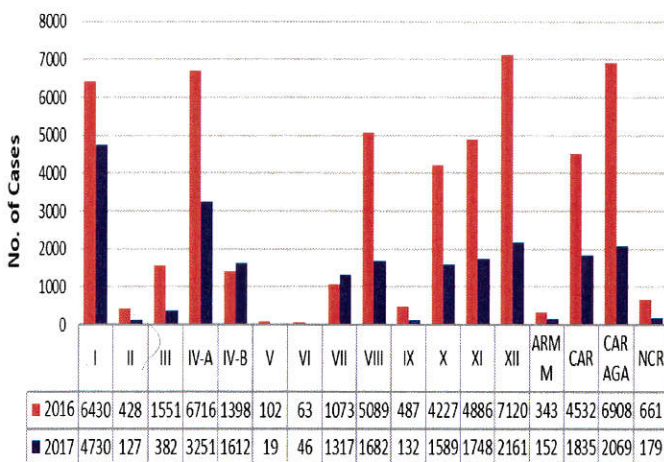
**Fig. 2 Influenza Cases by Morbidity Week, Philippines, as of June 3, 2017**  
 2017\* vs 2016 (N=23,031)  
 Legend: 2017 (yellow bars), 2016 (grey line), CFR (red dashed line)



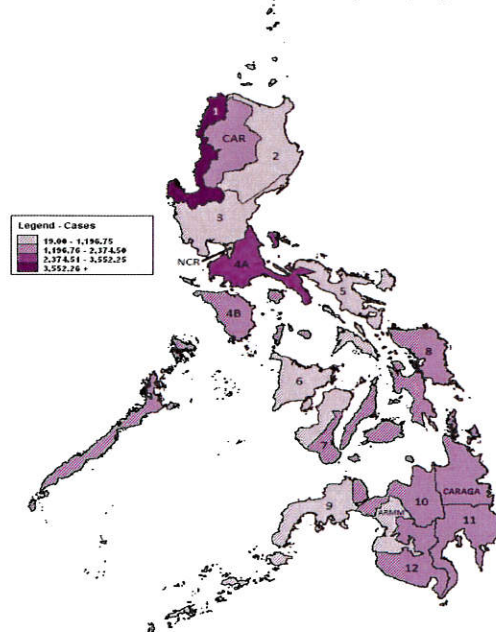
## Geographic Distribution

Most of the cases were from the following regions: **Region I** (20.54%), **Region IV-A** (14.12%), **Region XII** (9.38%), **Region CARAGA** (8.98%), and **Region CAR** (7.97%) (Fig. 3)

**Fig.3 Influenza-like Illness Cases by Region**  
 Philippines, 2017\* vs 2016,



**Influenza-like Illness MW 22 (N=23,031)**



*\*NOTE: Case counts reported here do NOT represent the final number and are subject to change after inclusion of delayed reports and review of cases.*



January 1 – June 3, 2017

Epidemiology Bureau  
 Public Health Surveillance Division

## Profile of Cases

Ages of cases ranged from less than 1 month to 100 years old. Majority of cases were male (51%). Most of the cases belonged to the 1 to 4 years' age group (32.83%) (Fig. 4). There were 7 reported deaths (CFR=0.03%) (Fig. 5).

Fig. 4 Influenza-like Illness Cases by Agegroup and Sex  
 Philippines, as of June 3, 2017 (N=23,031)

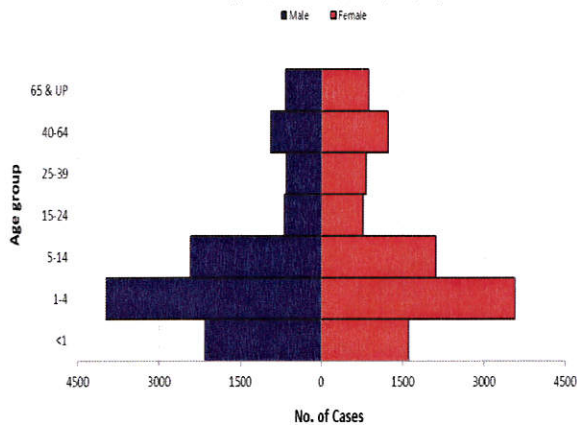


Fig. 5 Influenza-like Illness Case Fatality Rate (CFR) by Age Group,  
 Philippines, as of June 3, 2017

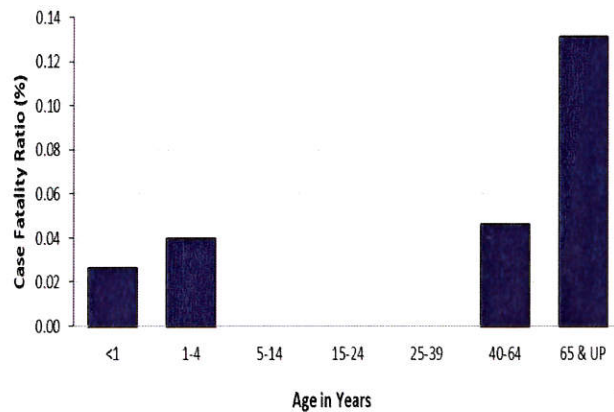


Table 1. Influenza-like Illness Cases & Deaths by Region  
 Philippines, 2017\* vs 2016

Region	Cases			Deaths			
	2017	2016	% Change	2017	CFR (%)	2016	CFR (%)
I	4730	6430	→ -26.4	0	0.00	1	0.02
II	127	428	↓ -70.3	0	0.00	1	0.23
III	382	1551	↓ -75.4	0	0.00	0	0.00
IV-A	3251	6716	↓ -51.6	2	0.06	1	0.01
IV-B	1612	1398	↑ 15.3	0	0.00	1	0.07
V	19	102	↓ -81.4	0	0.00	0	0.00
VI	46	63	→ -27.0	0	0.00	0	0.00
VII	1317	1073	↑ 22.7	0	0.00	1	0.09
VIII	1682	5089	↓ -66.9	0	0.00	1	0.02
IX	132	487	↓ -72.9	0	0.00	0	0.00
X	1589	4227	↓ -62.4	0	0.00	0	0.00
XI	1748	4886	↓ -64.2	1	0.06	1	0.02
XII	2161	7120	↓ -69.6	0	0.00	1	0.01
ARMM	152	343	↓ -55.7	0	0.00	0	0.00
CAR	1835	4532	↓ -59.5	1	0.05	0	0.00
CARAGA	2069	6908	↓ -70.0	3	0.14	11	0.16
NCR	179	661	↓ -72.9	0	0.00	0	0.00
<b>Total</b>	<b>23,031</b>	<b>52,014</b>	<b>↓ -55.7</b>	<b>7</b>	<b>0.03</b>	<b>19</b>	<b>0.04</b>

**EDITORIAL BOARD**

*Irma L. Asuncion*  
**IRMA L. ASUNCION, MD, MHA, CESO IV**  
 Director IV, Epidemiology Bureau

*Genesis May J. Samonte*  
**GENESIS MAY J. SAMONTE, MD, MSc, PHSAE**  
 OIC-Division Chief PHSD

*Mariel A. Dejesa*  
**MARIEL A. DEJESA, MD, MPM**  
 Medical Officer IV, PHSD

*June B. Corpuz*  
**June B. Corpuz, RN**  
 PIDSR Program Manager

*Jezza Jonah D. Crucena*  
**Jezza Jonah D. Crucena, RN**  
 VPD Program Manager

*Allan P. Ignacio*  
**Allan P. Ignacio**  
 Statistician II

\*NOTE: Case counts reported here do NOT represent the final number and are subject to change after inclusion of delayed reports and review of cases.